

Galway Lake Campers Association, Inc.

25 Washington Road, Scotia, New York 12302
A Privately Owned Membership Lake Located in Galway, New York

June 20, 2012

Dear Member,

Welcome to the 2012 summer season at beautiful Galway Lake. The 2011-2012 deep drawdown was successful and refill was completed May 4, 2012. Regaining a full lake in the spring is the principle responsibility of the lake level committee and I would like to thank Kurt Ladu, who volunteers his time and effort to monitor the level of the lake and adjust the tower gates. Due to Kurt's diligence we all will enjoy a full lake this summer. I would also like to remind you that if you leave a dock or boat on the lakebed you do so knowing it may be damaged or destroyed during the annual refill process.

The Darrin Fresh Water Institute (DFWI) conducted a weed survey of the lake in August 2012 to compare with the results of the pre-drawdown survey conducted by DFWI in 2010. The findings of this report are summarized within the attached Lake Preservation report and the full report has been posted on the GLCA website. If you are interested in reviewing the DFWI report please visit www.galwaylakeassociation.com and you can download a PDF version of the document for your review.

Protecting Galway Lake is at the forefront of the GLCA's Lake Preservation Committee efforts. For further information on the work that is in process and suggestions on how you can help in protecting the quality of Galway Lake please be sure to read the information provided by the Lake Preservation Committee as enclosures to this letter, on the GLCA website and attend the Annual Meeting of the Association on July 14, 2012.

Controlling weeds within the lake is only part of the solution, reducing the total amount of nutrients allowed to enter Galway Lake is **critical** to our lake's future. Each of us can positively impact the health of the lake by maintaining an effective septic system, eliminating the use of fertilizer on our property, not disposing of leaves and yard waste into the lake and by discouraging waterfowl from making Galway Lake their home.

The Galway Lake Sailing Club is running a Youth and Novice Sailing Program during the 2012 summer season. This program was first started in 2011 and was found to be highly successful and enjoyed by many youth sailors around the lake. If you or any of your family members are interested in sailing on Galway Lake this is a wonderful opportunity to discover what it is all about.

The program will start Saturday, July 7 and will run each Saturday throughout the summer from 9:30 – 11:30 am. If you are interested please visit the GLSC website at www.galwaysailing.org or contact Matt Kniskern by phone at 518-261-6617 or email him at mknisker@nycap.rr.com to join the fun.

While you and your family enjoy the lake this season please remember to abide by all laws when operating a boat on the lake. Please remember that a life preserver must be in the boat for each person on board. For your own safety a life preserver should be worn at all times you are in a boat. Boats with electric motors must be licensed with the State of New York. Identify your boat(s) and raft with your camp number in the event that they are found adrift they will be easily identified as belonging to you. Please use a “catch and release” policy if you are fishing for sport on the lake. We all value the peace and quiet of Galway Lake, so please be considerate of your neighbors while preserving this special place. The Association does not support the use of fireworks on or around the lake, as it is illegal "to possess, use, explode, or cause to explode fireworks in the State of New York," unless you have a license to do so -- New York State Penal Law, Section #270.

It is especially important that you have your home identified with numbers and letters that are at least three (3) inches high and clearly visible so that emergency services can find your home in the event of an emergency. Any Grove where year-round residency exists has the responsibility for maintaining its roads to allow year-round access of emergency vehicles and personnel. The Galway Lake Fire Department needs a **minimum clearance of 14 feet** to navigate its equipment to your home. If your road is not maintained with the proper minimum clearance you are greatly increasing the likelihood of disaster.

In order to control our operating costs and provide regular communications the GLCA would like to know your interest in receiving email communications. Each mailing costs the GLCA approximately \$600, making it prohibitive to send regular communications. As email has almost zero cost to the Association, we will be able to communicate with you on a regular basis. If you are interested in regular emails please let us know by sending an email to grundell@nycap.rr.com. We will continue to send the annual letter via the U.S. Postal Service.

This year the Board has approved a tentative assessment per camp of \$200. This assessment level is \$20 less than 2010-2011 and will provide for a prudent budget that includes funding for the capital reserve fund to meet future capital expenditures. Following is the tentative budget for 2011-2012. If this budget is approved at the Annual Lake Association Meeting that will be held at the Ruback's Grove Pavilion on Saturday July 14, 2011 at 7:00PM, the assessment per camp will be: \$200.

2012-2013 Budget

Taxes	\$33,000.00
Legal	\$10,000.00
Audit & Tax Preparation	\$1,500.00
Donations	\$1,500.00
Directory	\$0.00
Insurance	\$34,000.00
Maintenance	\$4,000.00
Clerk Office Expenses	\$5,000.00
Federation of Lakes Dues	\$600.00
Capital Reserve Fund	\$38,000.00
Water Testing	\$3,500.00
Engineering Study – (to address DEC Dam Requirements)	\$7,000.00
Waterfowl Management	\$2,200.00
Contingency	\$5,000.00
	<u>\$145,300.00</u>

I would like to encourage you to attend the annual meeting on July 14th to understand more about the lake and present any questions or concerns that you may have with regard to Galway Lake. If you are unable to attend please use the proxy provided below to designate someone else to represent your interest. Please send your proxy to Ms. Lois Seyse, Clerk, 25 Washington Road, Scotia, New York, 12302.

Sincerely,



J. Glen Rundell,
President

--PROXY--

TO: Ms. Lois B. Seyse, Clerk
Galway Lake Campers Association, Inc.
25 Washington Road
Scotia, New York 12302

I hereby appoint _____ to act for me in matters to be enacted at the July 14, 2012 Annual Meeting of the GLCA.

My Grove is _____ Signed: _____
My camp number is _____ Date: _____

Please sign and return this proxy if you do not plan to attend the meeting

GALWAY LAKE CAMPERS ASSOCIATION INC.
Lake Preservation Committee Report for 2011

General:

The recreational quality of Galway Lake during the 2011 season was the best that it has been for the past several years. The impact of invasive weed growth on recreational activity was significantly less than in previous years; there were no significant algae blooms and all bacteria tests taken at lake beaches were within safe limits.

Storm Water Runoff Study:

During the winter and spring of 2011, the Darin Fresh Water Institute (DFWI) conducted a study to determine whether storm water and spring runoff are a significant source of lake nutrients and/or bacteria.

Prior to the study, measures had been taken to help neutralize the runoff from a farm in the north end of the lake that was suspected to be partly responsible for the major algae issue in North Bay during the 2007-8 seasons. These measures involved improvements in farm manure management and a project to divert storm water runoff from the farm that ran directly into the lake. The 2011 DFWI study focused on inlets and storm water sources in North and West Bays and involved the analysis of numerous water samples taken at a variety of locations after rain events and during the spring thaw.

The primary conclusion drawn from the 2011 study was that storm water and spring runoff only account for a small portion of the nutrients and bacteria flowing into Galway Lake, and that lake nutrient and bacteria issues should be attributed to sources such as; septic leachate, direct runoff from shore line lots (fertilizer/ garden waste etc.) and waterfowl.

Weed Control:

In October 2011, the Darwin Freshwater Institute (DFWI) published a study that compared the results of weed surveys they conducted prior to and following the deep drawdown of 2010-2011. The study concluded that the draw down resulted in a substantial reduction in the growth of Eurasian Watermilfoil and that lake level drawdowns are not having a particularly negative impact on native aquatic plant species. This is the third time, since 1989, that a deep drawdown has been used to effectively control Eurasian Watermilfoil growth in Galway Lake. The 2011 Weed Survey also found a new invasive weed known as Brittle Naiad, but, DFWI does not expect this plant will have a significant impact on the future recreational use of the lake. Anyone interested in reviewing the DFWI Weed Survey Reports may do so on the Association Web site.

Invasive Threats to the Recreational Quality of our Lake:

A new invasive aquatic plant known as "Hydrilla" has moved into upper NY State. This plant is

very aggressive and, like Eurasian Watermilfoil, it can quickly and significantly impact a lake's recreational quality. Other invasives, such as the Asian Clam, are spreading and infesting new water bodies. Lake George has spent over a half million dollars attempting to control a localized infestation of Asian Clams, but, despite their best efforts new and larger infested areas have been found in the lake.

The primary manner, by which hydrilla and other invasives (plant and animal) migrate from one water body to another, is by boats or equipment that is not effectively cleaned prior to being moved.

Last year we provided an attachment to the Lake Preservation Committee Report which discussed "How Campers can help protect our lake". One of our most important tasks is to detect a new invasive plant or animal as early as possible. The more eyes we have working on this task, the higher the probability that we will detect the problem early and be able to address it successfully. Therefore, all Campers should become familiar with the plant and animal invasives that threaten our lake and report any probable sightings to the contacts listed at the end of this report. Pictures and descriptions of the invasives are attached to this report.

Septic Pumping:

De Jong Septic will provide association members a \$40.00 discount on septic pumping services. The rate for 2012 is \$145.00 plus tax and a \$10.00 fuel charge for a 1000 gal tank. For septic pumping and other related services call: Rena De Jong at 842-1540.

Galway Lake Integrated Management Plan:

Association members are encouraged to review the revised Management Plan which is on the association web site.

Attachments:

The 2010 Report contained two attachments that we are providing again this year because of their importance to the lake preservation effort and need to keep campers aware of health risks.

Blue- Green Algae: Blue-green algae blooms can present a significant health risk to both humans and animals. The attachment provides information that should help campers identify and deal with this problem.

How Campers Can Help Protect Our Lake: This attachment identifies several ways that campers can help to minimize the impact of nutrients, bacteria and invasive plants or animals.

Pictures of the Invasives that threaten our lake.

Lake Preservation Committee Points of Contact:

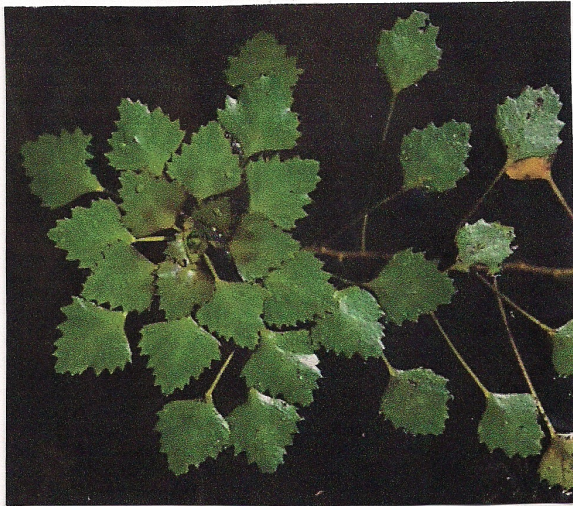
Bruce Kniskern (518) 882-6166 Bruce Rowell (484) 788-9411

INVASIVE AQUATIC PLANTS

Water Chestnut and **Hydrilla** are aggressive and invasive aquatic plants currently impacting the recreational quality of several lakes and other water bodies in New York State. The early detection of an invasive will increase the probability of dealing with it successfully.

WATER CHESTNUT: View #1 depicts the plant in its natural state –floating on the water.
View #2 depicts the relative size of a mature plant.

View#1



View #2



HYDRILLA: View #1 shows the plant in its natural state below the surface of the water.
View #2 indicates the relative size of a mature plant.

View #1



View #2



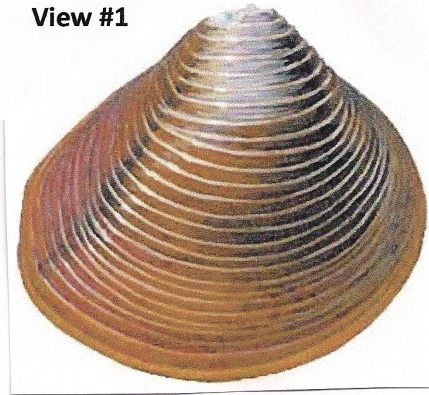
OTHER INVASIVE SPECIES

The **Asian Clam**, **Zebra Mussel** and **Spiny Water Flea** are other invasive species that threaten the recreational quality of Galway Lake.

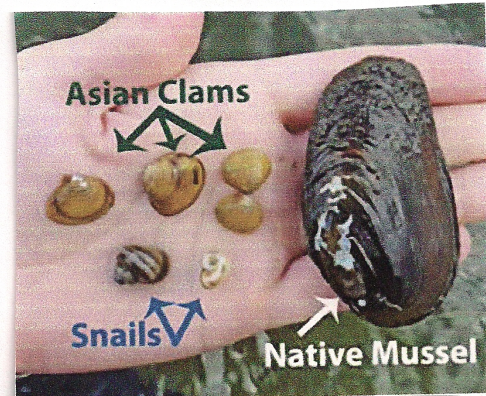
ASIAN CLAM: View #1 depicts the clam shape and coloring.

View #2 shows the relative size of the clam.

View #1



View #2



ZEBRA MUSSEL: View #1 depicts the Mussel shape and coloring.

View #2 depicts the clams in their natural state, attached to a hard surface.

View #1



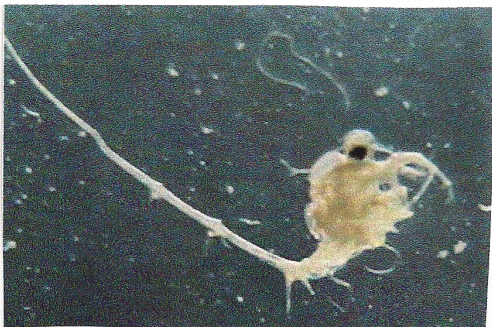
View #2



SPINY WATER FLEA: View#1 depicts the flea in its natural state (magnified several times).

View #2 depicts on a fishing line.

View 1



View #2

